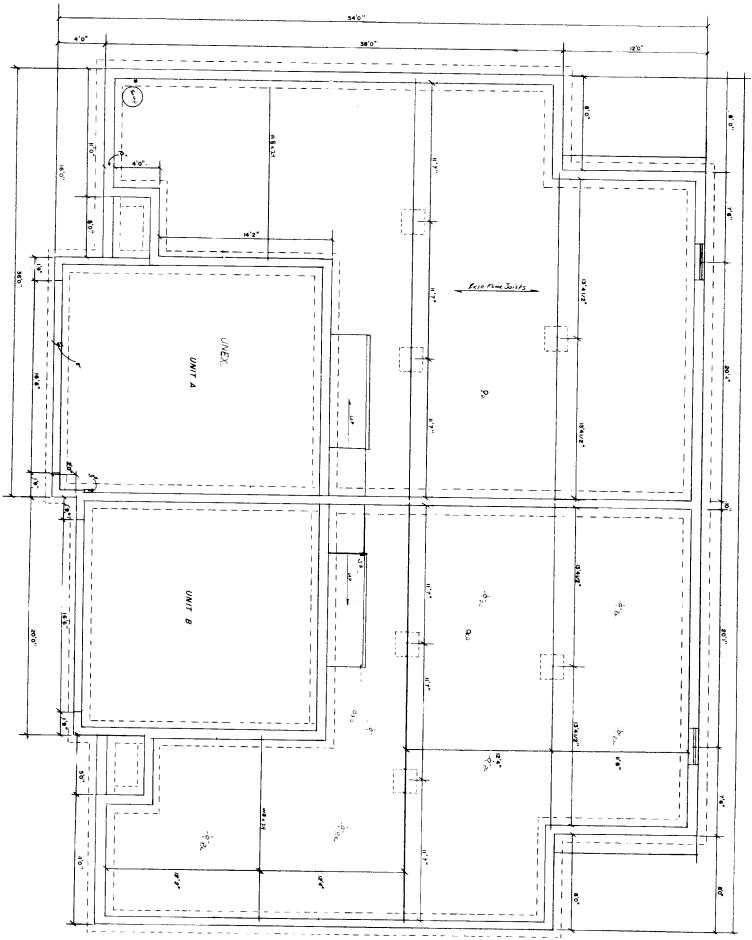


421



CONDOMINIUM PLAT

WILDERNESS LANE CONDOMINIUM

CITY OF DELAFIELD, WAUKESHA COUNTY, WISCONSIN.

THIS INSTRUMENT WAS DRAFTED BY WILLIAM J. KAPPEN
 FOR FLEETWOOD DEVELOPMENT CORP.
 DATED THIS 19TH DAY OF DECEMBER, 1994.

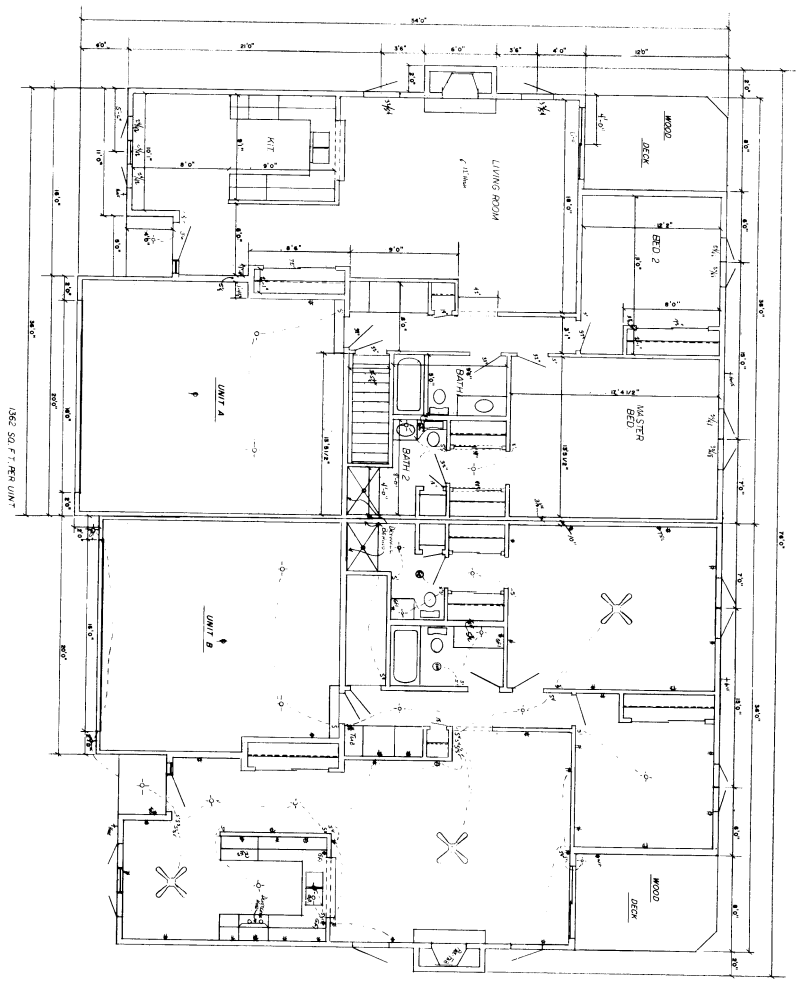


2624 N. 102ND STREET
 WATKINS, WISCONSIN 53098
 PHN (480) 257-2282
 FAX (480) 257-2443

BASEMENT PLAN

JOB NO. 25555
 SHEET 2 OF 3

422



GROUND LEVEL PLAN

CONDOMINIUM PLAT

WILDERNESS LANE CONDOMINIUM

CITY OF DELAFIELD, WAUKESHA COUNTY, WISCONSIN.

THIS INSTRUMENT WAS DRAFTED BY WILLIAM J. KARPEN
 FOR FLEETWOOD DEVELOPMENT CORP.
 DATED THIS 19th DAY OF DECEMBER, 1994.



2594 N. 30th STREET
 WAUKESHA, WI 53085
 PHN (414) 527-2232
 FCO (414) 527-2483

JOB NO. 25555
 SHEET 3 OF 3